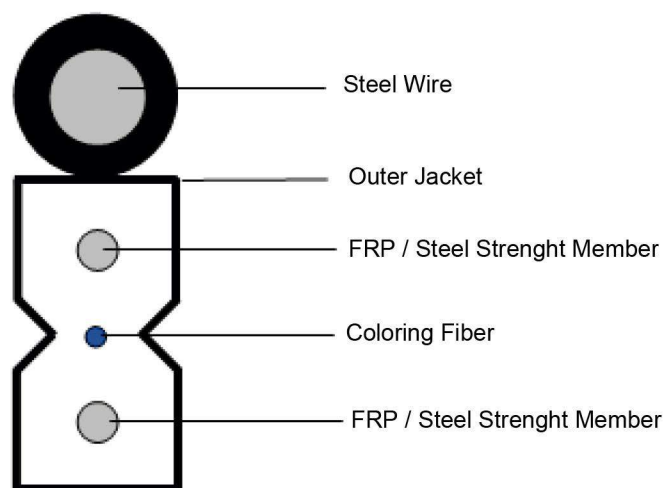




## Cable Drop Flat

With increasing popularity and promotion of FTTH construction, drop cable build on G657A1,A2 fiber core begin widely used in corridor, household environment. As one entering fiber optic cable, drop cable is suitable for application of outdoor to indoor connection and terminal installation requiring smaller cable bending.

According to the way of cable installation, we could factory preterminate connectors in one end or both ends on drop cable, compared to fast connector, drop cable patch cord have higher stability and service life.



### Characteristic

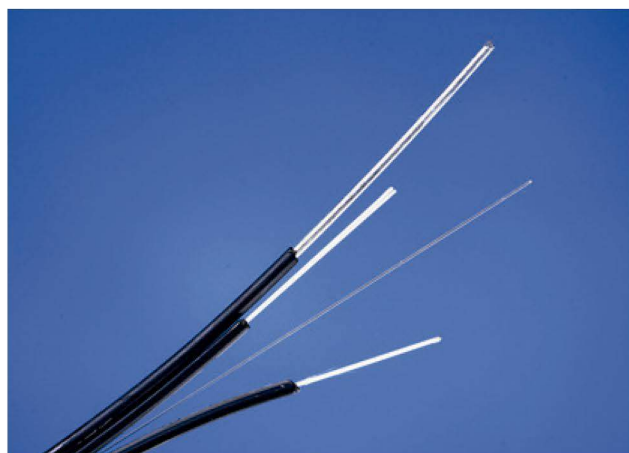
- Special low-bend-sensitivity fiber provides high bandwidth and excellent communication transmission property
- Two parallel strength members ensure good performance of crush resistance to protect the fiber.
- Simple structure, light weight and high practicability.
- Novel flute design, easily strip and splice, simplify the installation and maintenance.
- Single steel wire as the additional strength member ensures good performance of tensile strength.

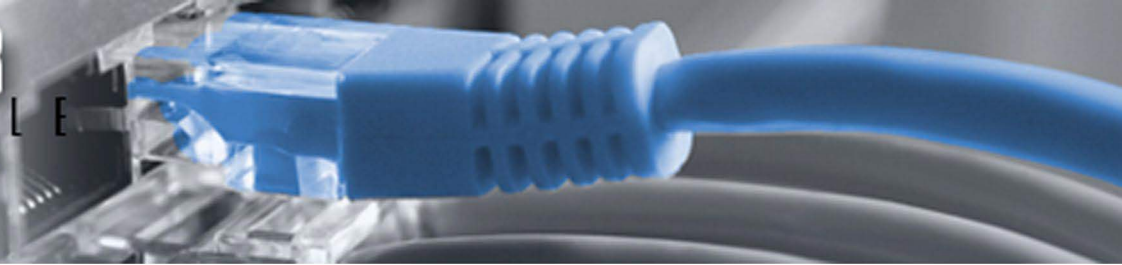
### Application

Suitable as cable extending from outdoor (as aerial cable) to indoor.

### Fiber type

G.657A/B & G.652D





## Cable Drop Flat

### Optical Fiber Construction and Character

Item		Specification
Core		Doped silica
Cladding		Material
		Silica
		Diameter
		125 ± 1 μm
Primary	Inner Layer	Material
		UV curable acrylate
Coating	Outer Layer	Material
		UV curable acrylate
Colored fiber diameter		242 ± 10 μm
Identification		Color coating
Mode field concentricity error		≤ 0.8 μm
Mode field diameter		9.2 ± 0.4 μm at 1310 nm (G652D) 9.0 ± 0.4 μm at 1310 nm (G657A) 8.9 ± 0.4 μm at 1310 nm (G657B)
Cladding non-circularity		≤ 2.0%
Cut-off wavelenght		≤ 1260 nm
Attenuation		0.4 db @ 1310nm 0.3 db @ 1550nm
Zero Dispersion Slope		< 0.092ps / km . nm <sup>2</sup>
Dispersion (1285 ~ 1340nm)		- 3.5 - 3.5ps (nm.km)

### Drop Cable Construction

Item		Specification
	Number	1 2
	Color	Blue Blue/White
Strength member	Material	FRP or Steel wire
	Diameter	Nominal 0.6mm
Suspension member	Number	2
	Material	tighwire
Sheath	Diameter	Nominal 1.0mm
Maximum pulling tension (IEC 794-1)	Material	LSZH, black color
	Long Time	220N
Crush resistance (IEC794-1)	Short Time	600N
	Long Time	300N
Temperature	Short Time	1000N
	Operation	-20 ~ + 60 °C
	Storage	-20 ~ + 60 °C
Min Bend Radius		R= 32mm, remove Suspension member (G.652D) R= 15mm, remove Suspension member (G.657A) R= 7,5mm, remove Suspension member (G.657B)
Cable dimension		Aprox. 2.0mm x 5.3mm
Cable weight		Aprox. 22kg/km